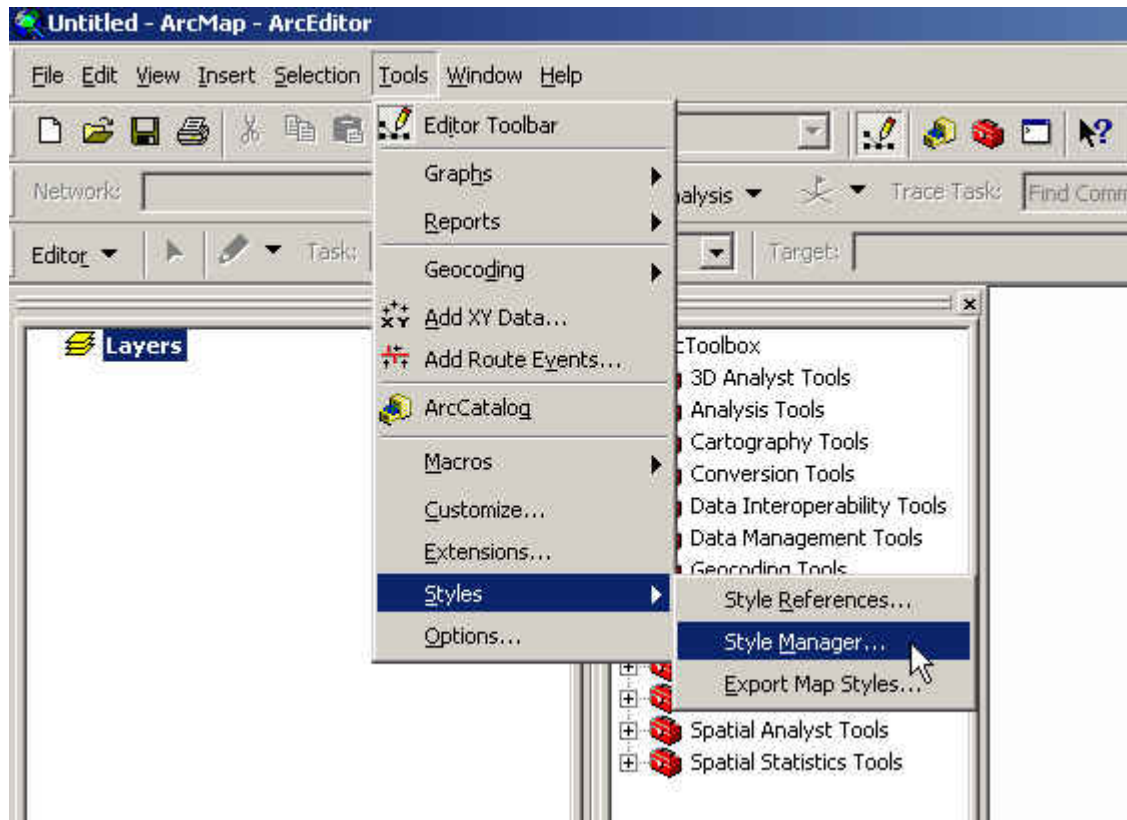


How to import a Style Sheet in the Arc Map GIS software?

After downloading your Style Sheet file for the related product

1. Open the Arc Map GIS software
2. Click 'Tools', 'Styles', and 'Style Manage'



3. In the 'StyleManager' window, click 'Styles', 'Add', and go get the Style Sheet that you already saved on your computer.