
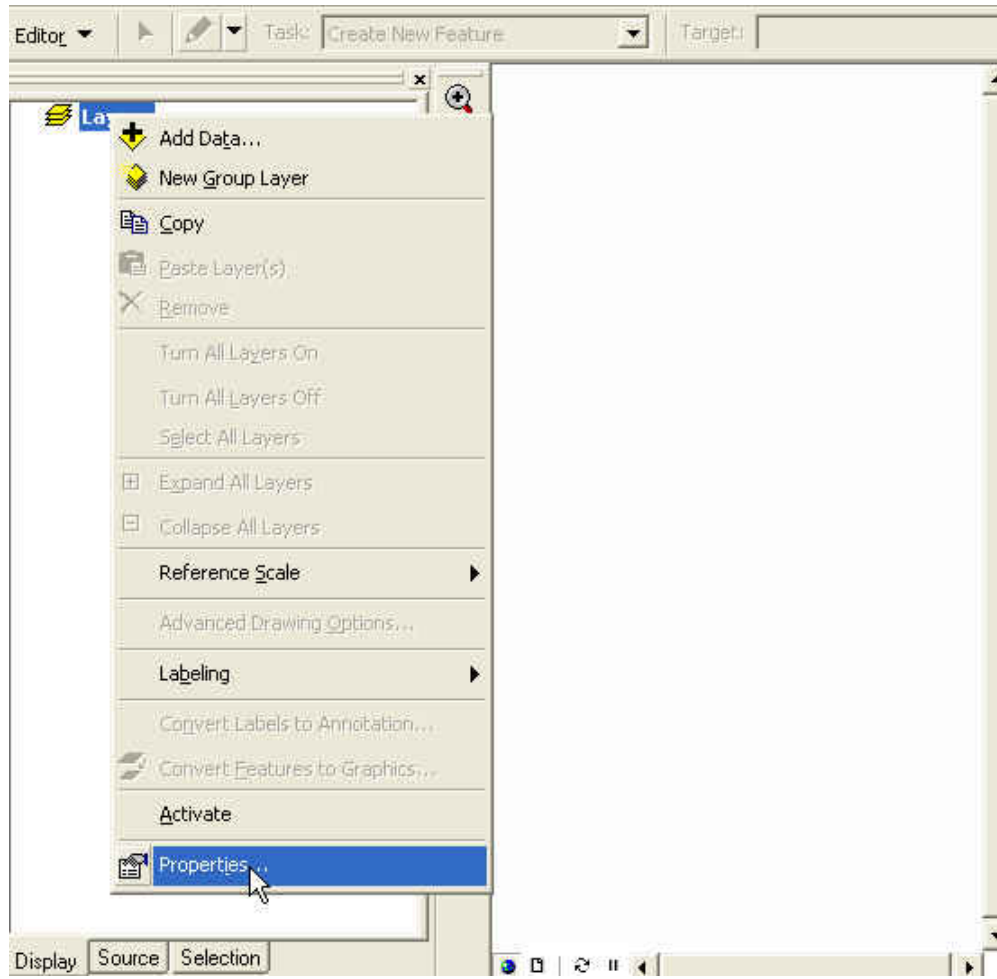
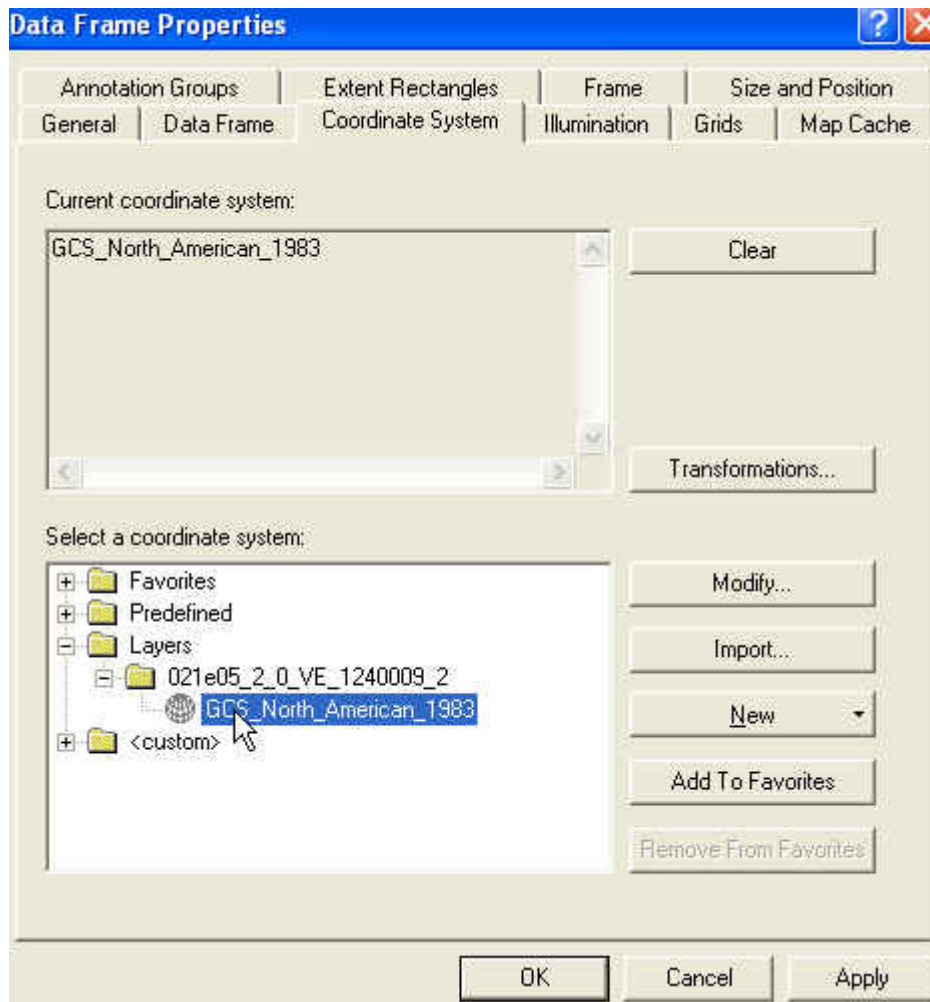


Procedure to add a symbology to a NTDB Shape file

- 1 Open the Arc Map GIS software, import the Style Sheet 'ntdb.style', according to the procedure 'ImportStylesheet.doc'. See 'How to import the symbol library in the style format in the Arc Map GIS software?' in the FAQ/Symbology section.
- 2 Open (File > Open) a project, see the supplied '[SymbologyToolntdb.mxd](#)' file.
A 'Smiley' icon will appear on your menu. 
- 3 Add (File > Add Data) the downloaded NTDB Shape file:
On the GeoGratis Web site: www.GeoGratis.gc.ca,
the fastest way to download a NTDB Shape file is by the 'Download Directory' on the left menu.
Direct link: <ftp://ftp2.cits.rncan.gc.ca/pub/bndt/>.
- 4 When the layers you selected are displayed, make sure that the data is in a projection (not 'No Projection').
1-Go to 'Properties' under 'Layers'



2-Click on the 'Coordinate System' tab



3-Select 'Layers', select 'GCS_North_American _1983', click on 'Apply', and click on 'OK'

Note: If you don't modify 'No projection' by 'GCS_North_American _1983', it can produce data display problems in the Arc Map software.

- 5 Click on the Symbolize button 😊
The process might take between 2 seconds to a minute. When the process is over, an automatic refresh is done and the new symbology is now active. The legend is also updated.

Note: If some features are in yellow, it means that there is no symbology in the Style Sheet for these features.